



Networking Academy Day

DigitalPakt jetzt!

Frank Slawitzki
EN SE / TSA
April 24, 2020



Cisco Intent-Based Networking

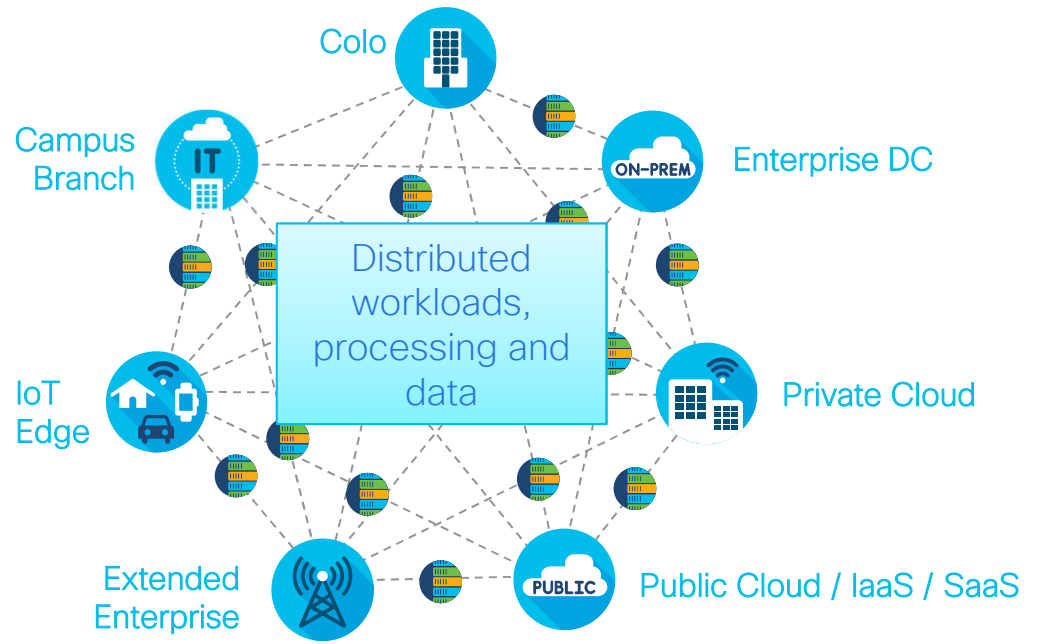
Vision & Strategy

New world network requirements

Increased application distribution, device scale and threats

Rapidly increasing users and things

- 66%** **Mobility**
Mobile device traffic will be 66% of total IP traffic by 2020¹
- 93%** **Cloud**
93% of organizations will use multiple clouds by 2019⁴
- 26B** **IoT**
26 billion networked devices and connections will exist by 2020²
- 100** **Security**
100 days industry average to detect a common threats³



No clear perimeters; increased risk

[2017 Cisco Security report](#)
[Cisco Complete VNI Forecast](#)
[Cisco 2019 Year in Review](#)
[Cisco Global Cloud Index Whitepaper](#)



```
Building configuration...
```

```
Current configuration : 130873 bytes
```

```
!
```

```
! Last configuration change at 09:35:14 Bahrain Wed Oct 17 2018  
by root
```

```
! NVRAM config last updated at 11:29:03 Bahrain Wed Oct 17 2018  
by root
```

```
!
```

```
version 16.9
```

```
no service pad
```

```
service timestamps debug datetime msec
```

```
service timestamps log datetime msec
```

```
service call-home
```

```
no platform punt-keepalive disable-kernel-core
```

```
!
```

```
hostname C9500-Core
```

```
!
```

```
!
```

```
vrf definition Mgmt-vrf
```

```
!
```

```
  address-family ipv4
```

```
  exit-address-family
```

```
!
```

```
  address-family ipv6
```

```
  exit-address-family
```

```
!
```

```
enable secret 5 <removed>
```

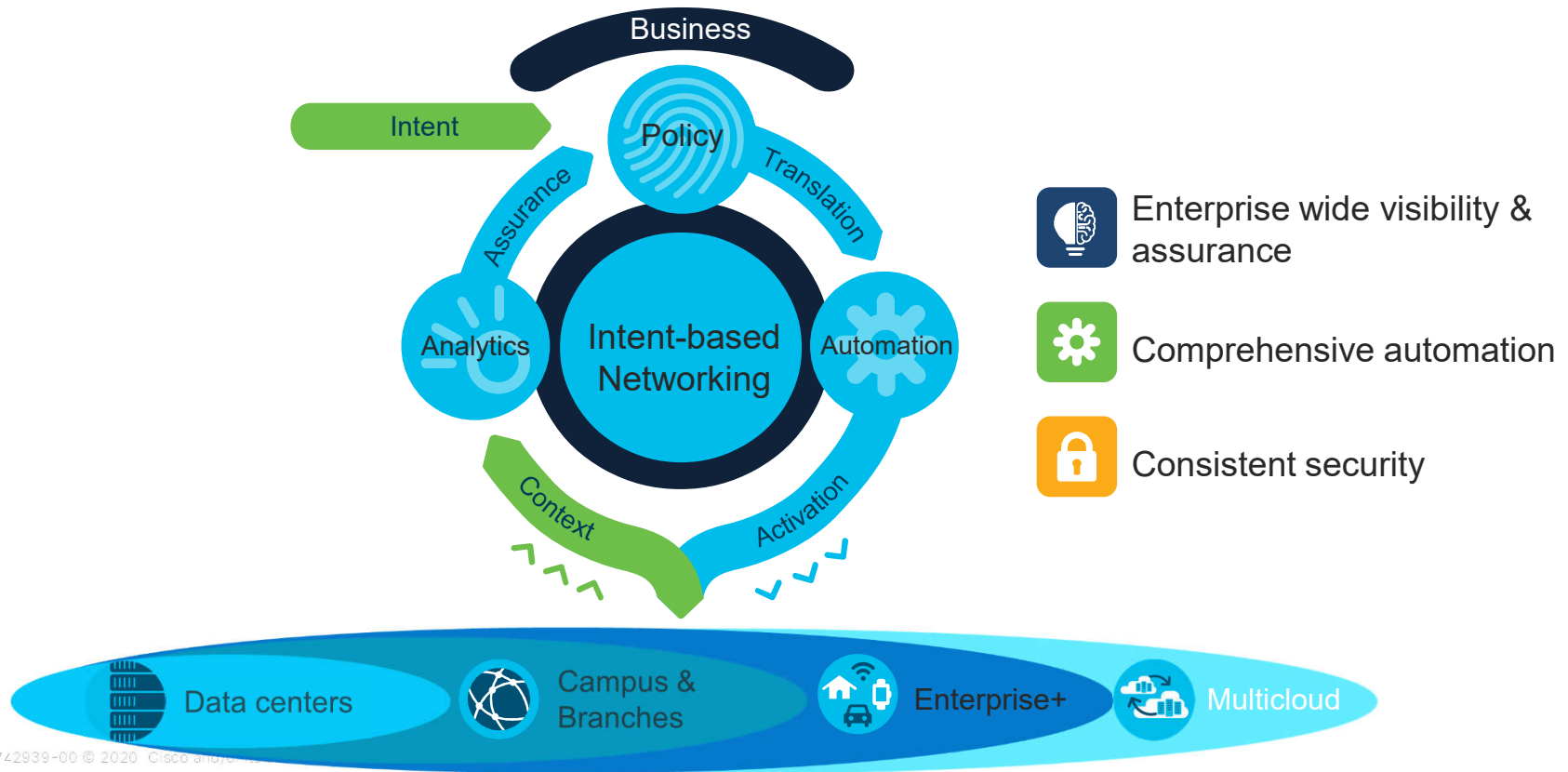
```
enable password <removed>
```

IT architecture must be reinvented for the realities of this next- generation digital world

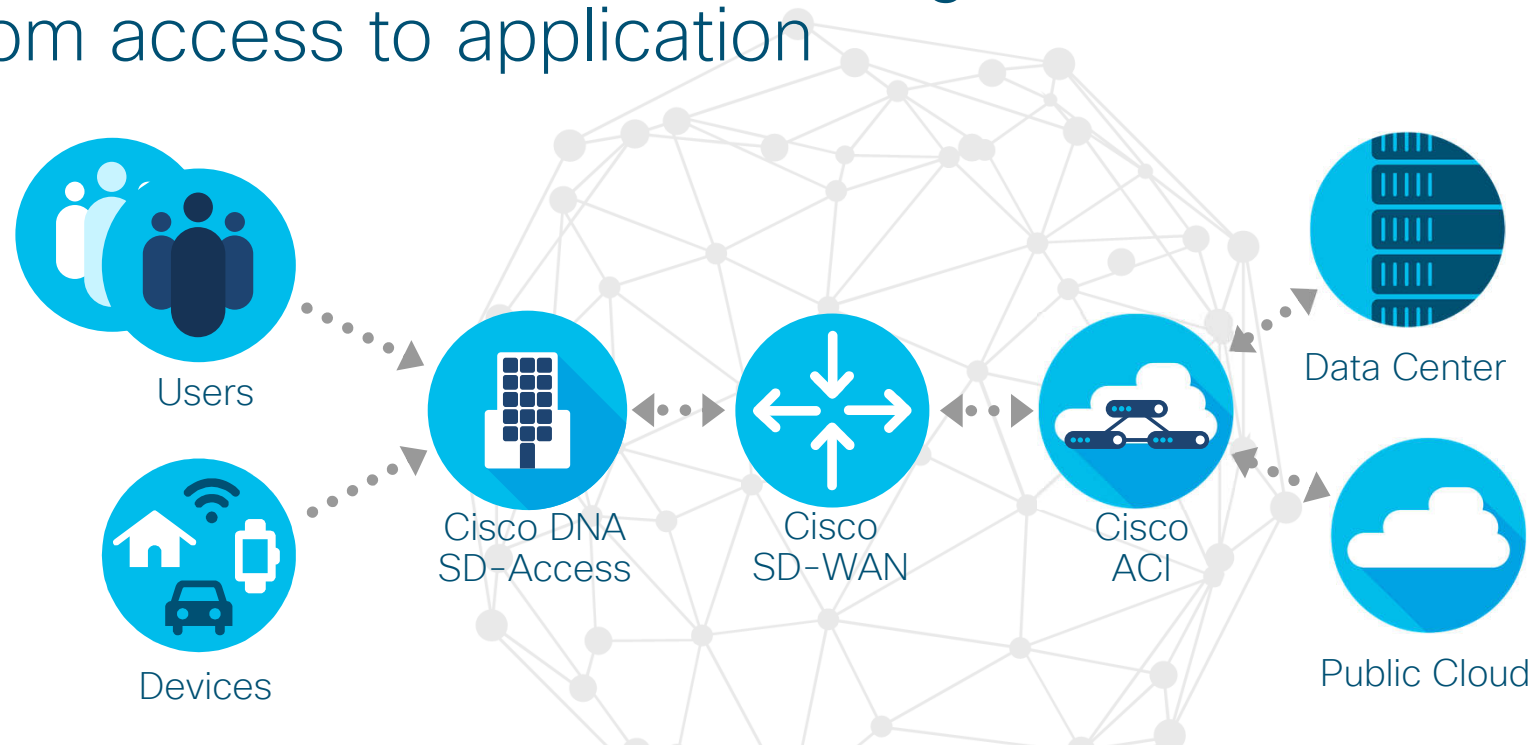
It must span across the new and
emerging network domains,
integrating them in
new ways



Intent-Based Networking Model

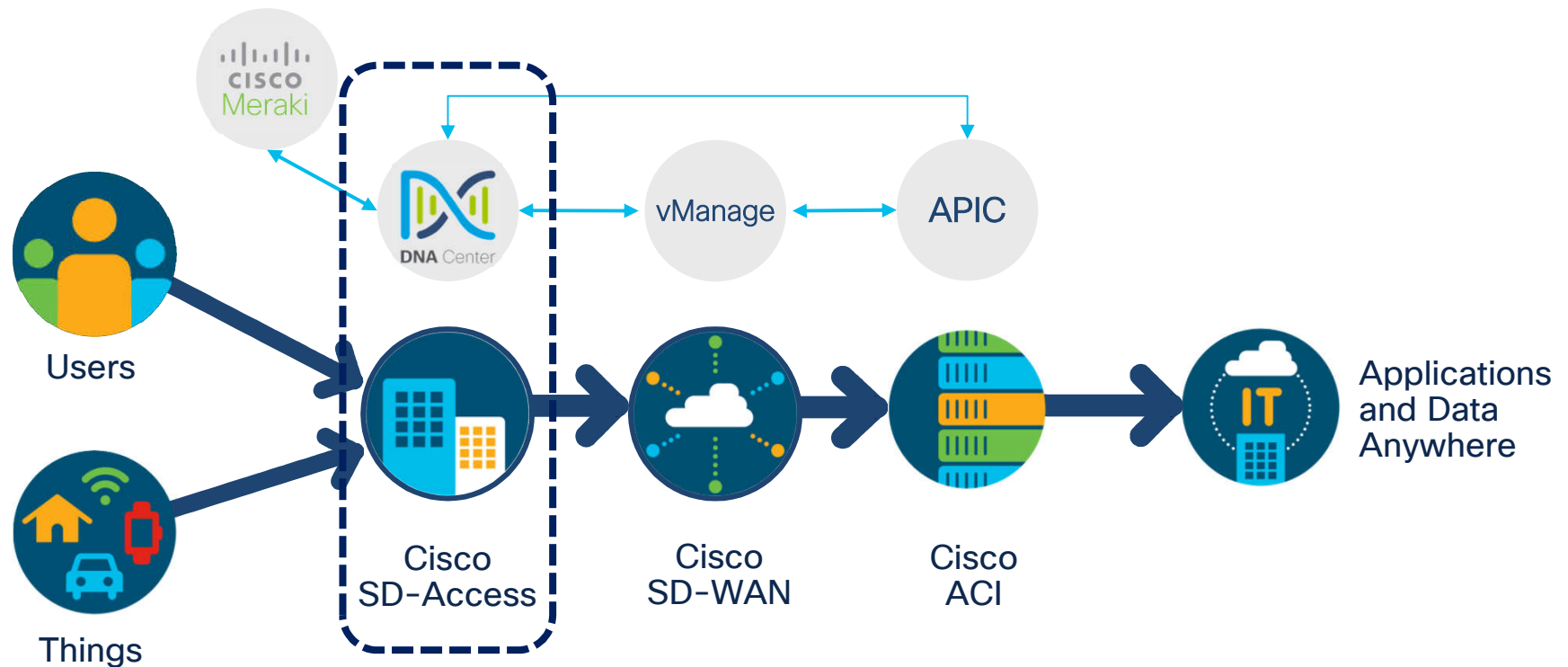


Cisco Intent-based networking solutions from access to application



Delivering intent-based networking across all networking domains

Building Cross-Domain Intent-Based Networking

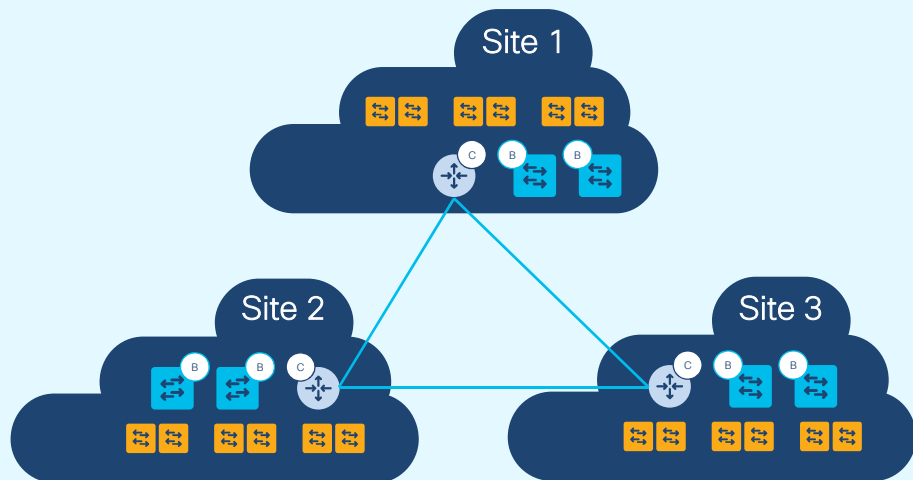


ML/AI Driven Analytics | Cloud Delivered Software | More Security Integration

© 2019 Cisco and/or its affiliates. All rights reserved. Cisco Public

Introducing SD-Access for Distributed Campus

Enhanced resiliency and scale for large deployments



Extend SD-Access benefits campuswide

- End-to-end policy and segmentation
- Enhanced resiliency and local isolation
- Direct Internet access per site
- Automated intersite connectivity
- Scalable to 100+ sites
- Flexible: 50 to 100,000 users per site

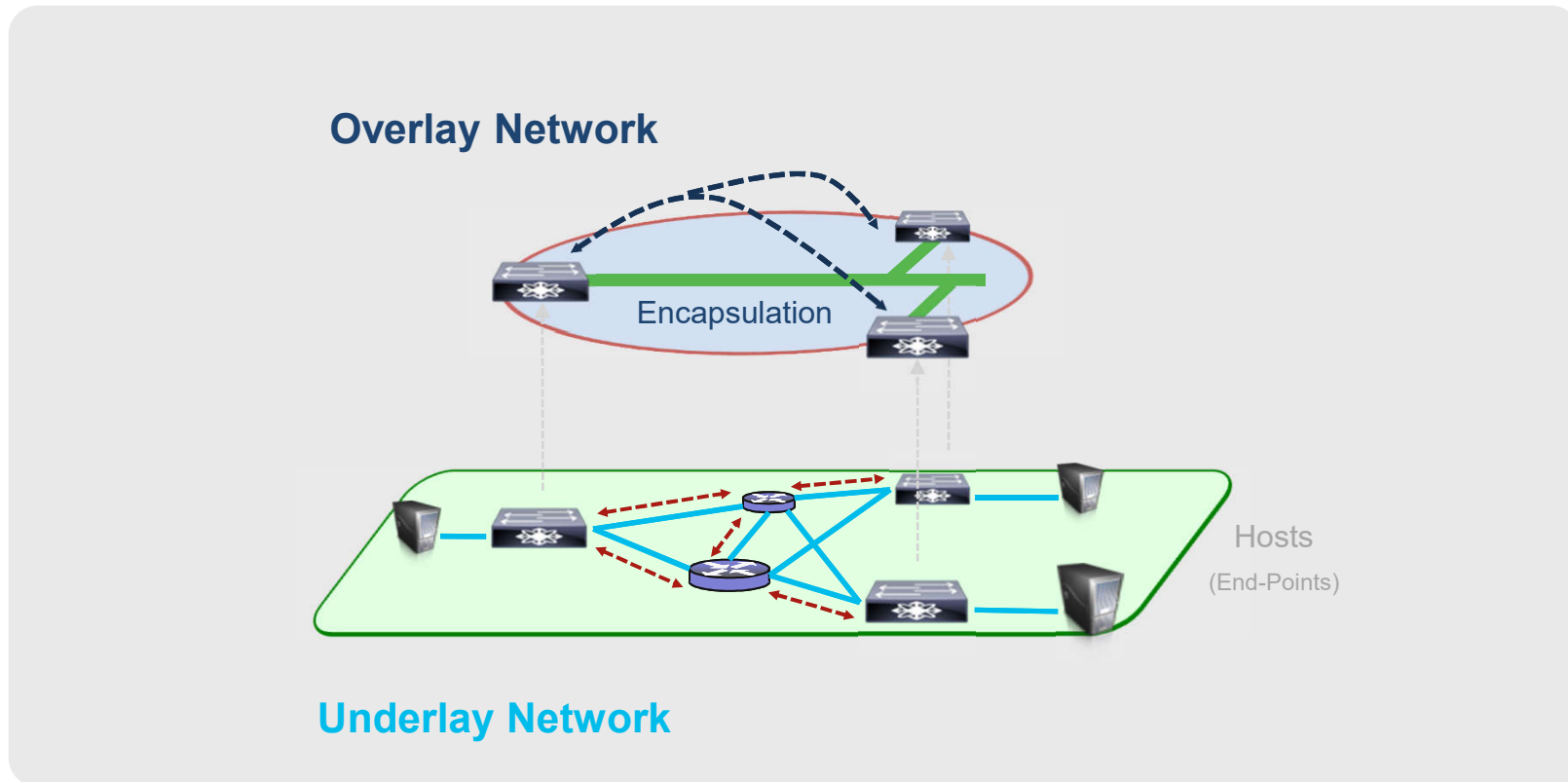
Automation and Assurance managed through Cisco DNA Center.



Cisco Software-Defined Access

Introduction and Overview

SD-Access Fabric – The Fabric Concept



Design



Provision



DNA Center



Policy



Assurance



Cisco ISE
Identity Services Engine



DNA Controller
Physical Server Appliance



Cisco NDP
Network Data Platform



Cisco Router



Cisco Switch



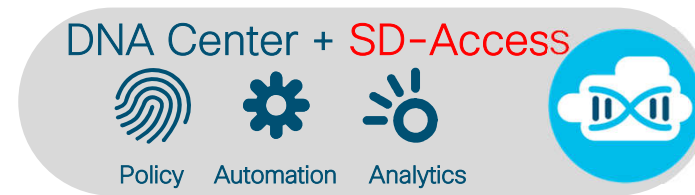
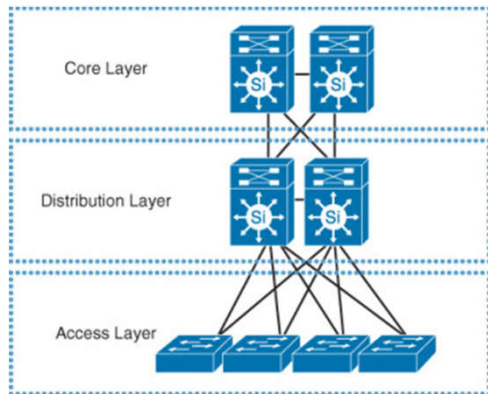
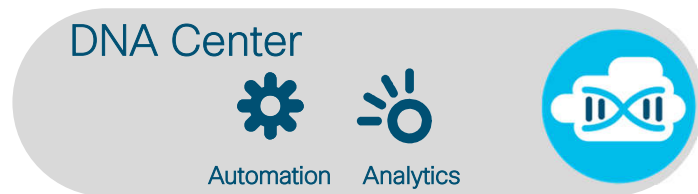
Cisco Wireless

The Fabric

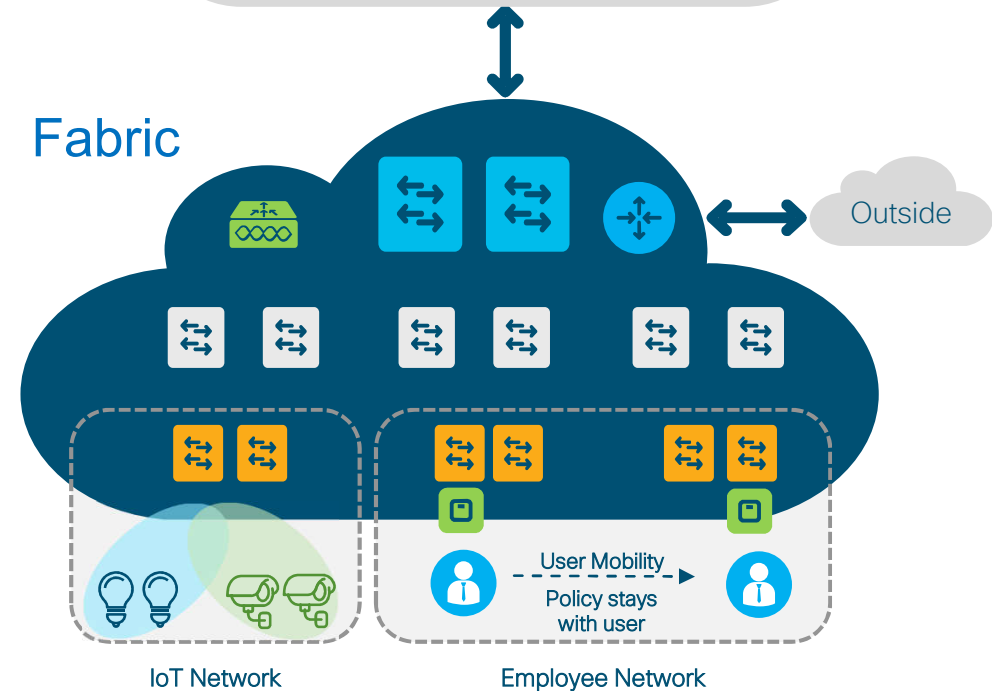
A collection of network devices under the administrative control of DNA Center

You decide what DNA-Center will do for you

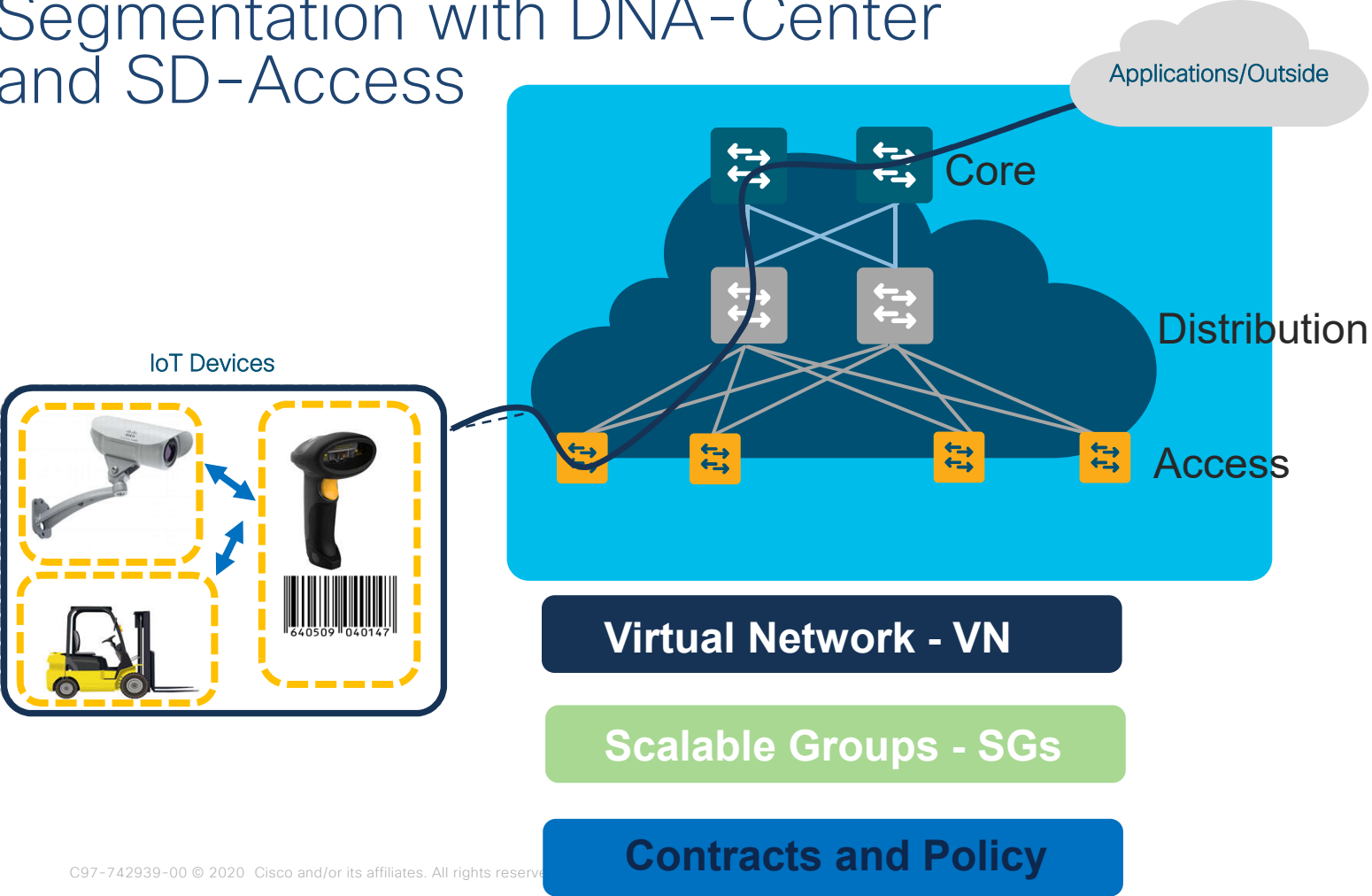
Classic



Fabric



Segmentation with DNA-Center and SD-Access





Cisco Catalyst for Education

Enterprise grade sized for small deployments

Catalyst for Every Port

IOT



RESILIENT



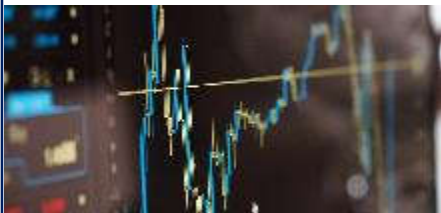
SECURE



MOBILITY



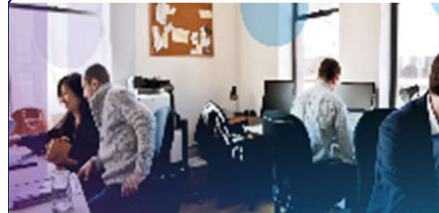
MULTICAST



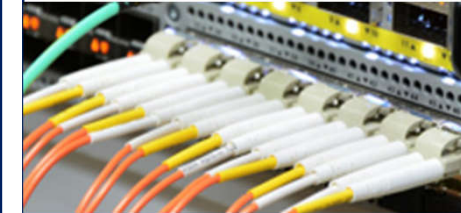
MEDIA



BRANCH



FTTH/FTTD

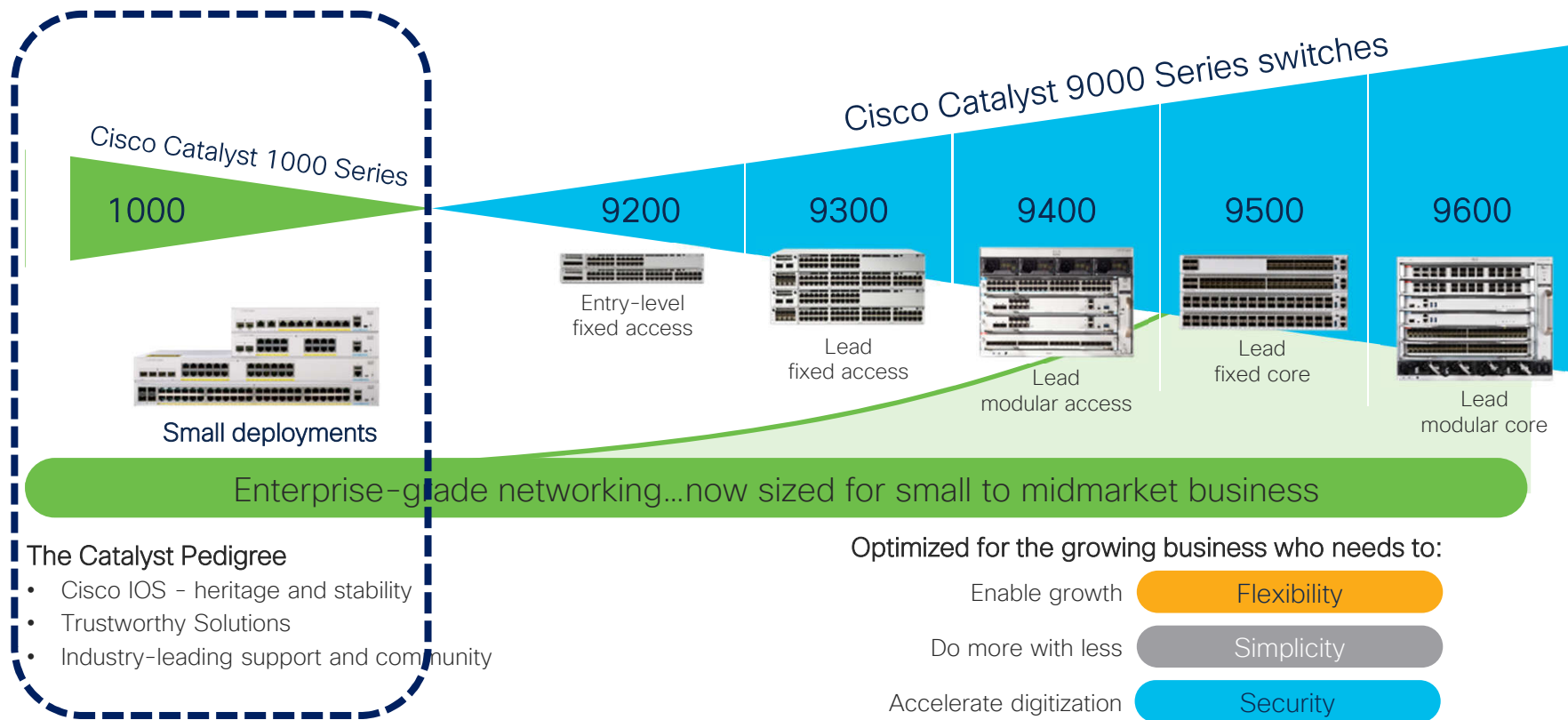


PROGRAMABILITY

VISIBILITY & ASSURANCE

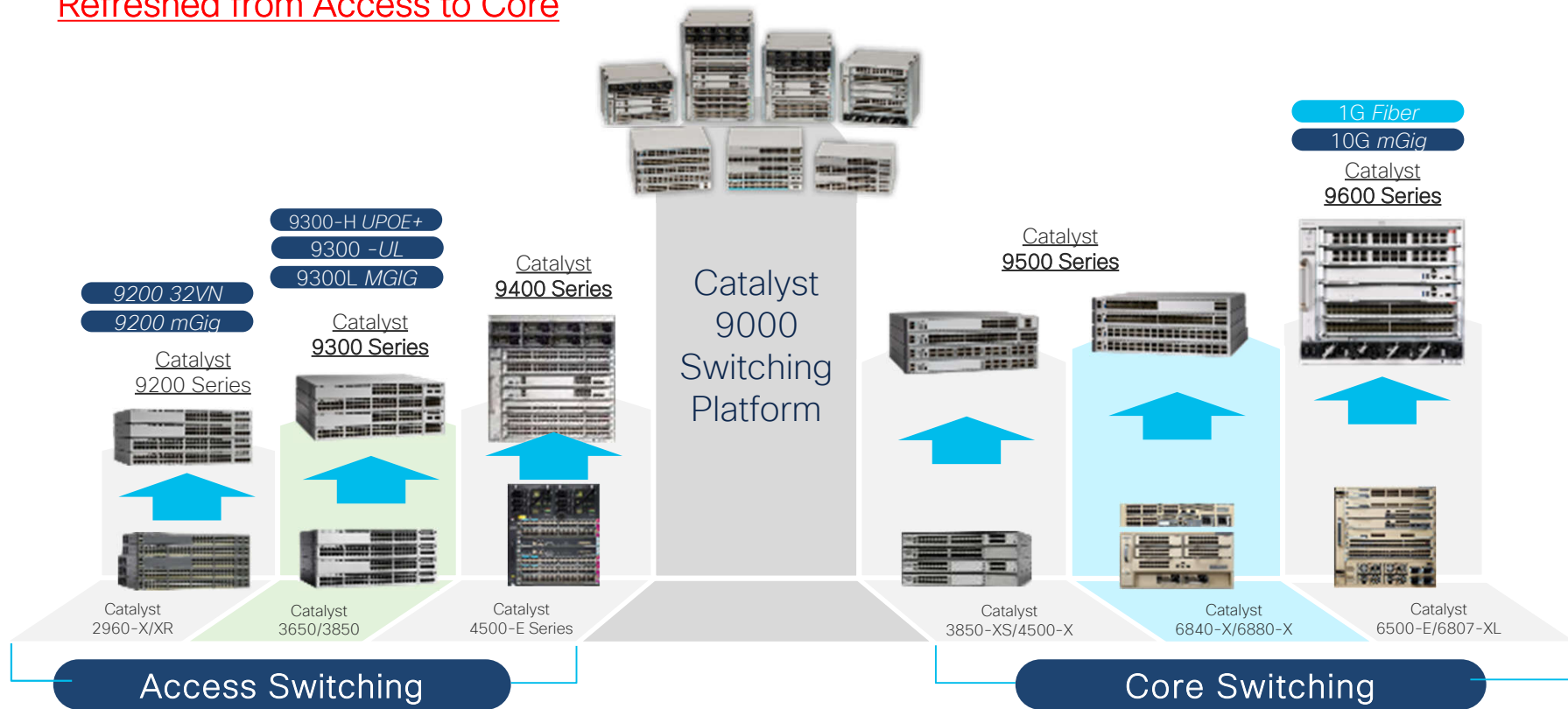
ONE PLATFORM MANY ARCHITECTURES

Expanding the Cisco Catalyst switching



Cisco Catalyst Switching Portfolio

Refreshed from Access to Core

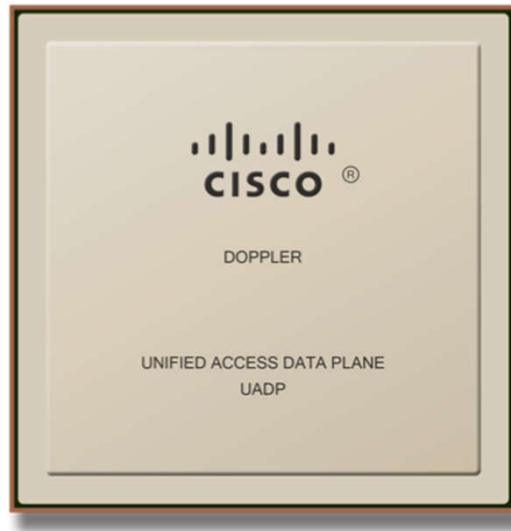




Cisco Catalyst 9000 Family

Introduction and Overview

UADP - Next Generation of ASIC Innovation



Up to 20B **Transistors**

- Investment Protection Flexible Pipeline
- Universal Deployments Adaptable Tables
- Enhanced Scale/Buffering Multicore resource share

- 384K Flex Counters**
- Shared Lookup**
- Up to 1.6T Bandwidth**
- Up to 2X to 4X Forwarding + TCAM**
- Embedded Microprocessors**
- Up to 36MB Packet Buffer**
- Up to 64K x2 Netflow Records**

Flexible & Programmable ASIC - Adapts to the New Technologies

Catalyst 9K Family – x86 CPU

X86 based architecture helps with hosting containers and apps that are designed for x86 systems

x86 opens up the doors for IOT & Cloud Apps

Puppet/Chef/etc.



